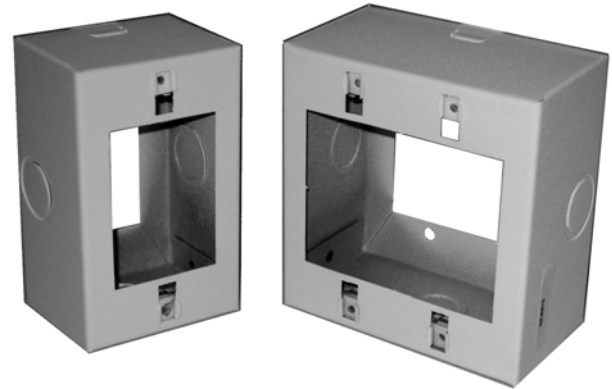
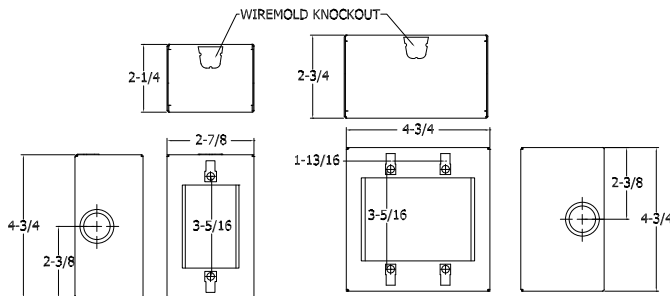




Quam

SE4W Single Gang Box SE4W/2 Double Gang Box

0403- SURFACE MOUNTING DEVICES



GENERAL DESCRIPTION

The Quam SE4W/x is a 22 gage steel, open back surface mount enclosure fitted with #6 cage nuts, one Wire-mold® knock-out and two combination 1/2"/3/4" knock-outs.

Finish: White baked epoxy hybrid

Formats:

- Single gang- SE4W
- Double gang- SE4W/2

INTENDED USE

Indoor environment

RECOMMENDED ADDITIONAL QUAM COMPONENTS

- 0501- Attenuators
 - SE4W- QC4-x, QC10x, QC101x
 - SE4W/2- QC100x
- 0501.1- Attenuators, UL Listed
 - SE4W- QC10x, QC101x
 - SE4W/2- QC100x
- 0503- Selectors, Switches
 - SE4W- PS6L, CIB3, CIB4
 - SE4W/2- PS6L/QC10, CIS10

Recommended construction sequences, installation instructions and A&E Specifications are available in various formats on the Quam Architects' and Engineers' Resources CD or on the web at: www.quamspeakers.com

04 BACK BOXES / MOUNTING DEVICES

Quam-Nichols Company

234 East Marquette Road, Chicago, IL 60637
 Phone: (800) NEED NOW Fax: (888) NEED NOW
 (800) 633 - 3669 (888) 633 - 3669
 E-Mail: neednow@qnc.com www.quamspeakers.com

