



Quam

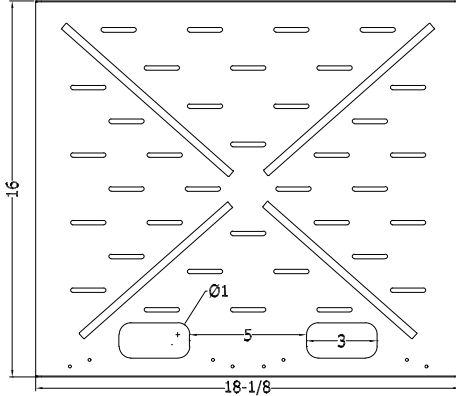
AS18X16

Wall Mount Equipment Shelf, Black

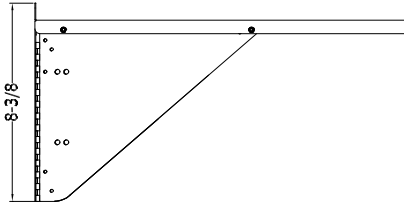
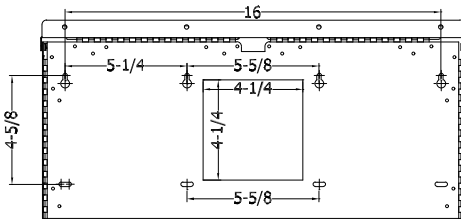
AS18X16/ W

Wall Mount Equipment Shelf, White

0701 - WALL MOUNT EQUIPMENT SHELVES



AS18X16 Shown



GENERAL DESCRIPTION

The Quam AS18X16/x is a steel, wall mounted equipment shelf assembly consisting of a horizontal platform with 1/2" raised front lip, embossed "X" frame reinforcement ribs and two support arms. Finish: Baked epoxy hybrid.

FINISH OPTIONS

Black Order as: AS18x16
White Order as: AS18x16/ W

INTENDED USE

Indoor, mounted perpendicular to wall surface and parallel to floor. Static load as noted in specifications.

SPECIFICATIONS

Static Load Capacity	AS18X16- 40 pounds*
----------------------	---------------------

*SAFETY WARNING! It is the responsibility of the Contractor and the AHJ to determine fastener type and method based on static load, mounting structure and local building codes.

Recommended construction sequences, installation instructions and A&E Specifications are available in various formats on the Quam Architects' and Engineers' Resources CD or on the web at: www.quamspeakers.com

Quam-Nichols Company

234 East Marquette Road, Chicago, IL 60637
Phone: (800) NEED NOW Fax: (888) NEED NOW
(800) 633 - 3669 (888) 633 - 3669
E-Mail: neednow@qnc.com www.quamspeakers.com



07 SHELVES

07